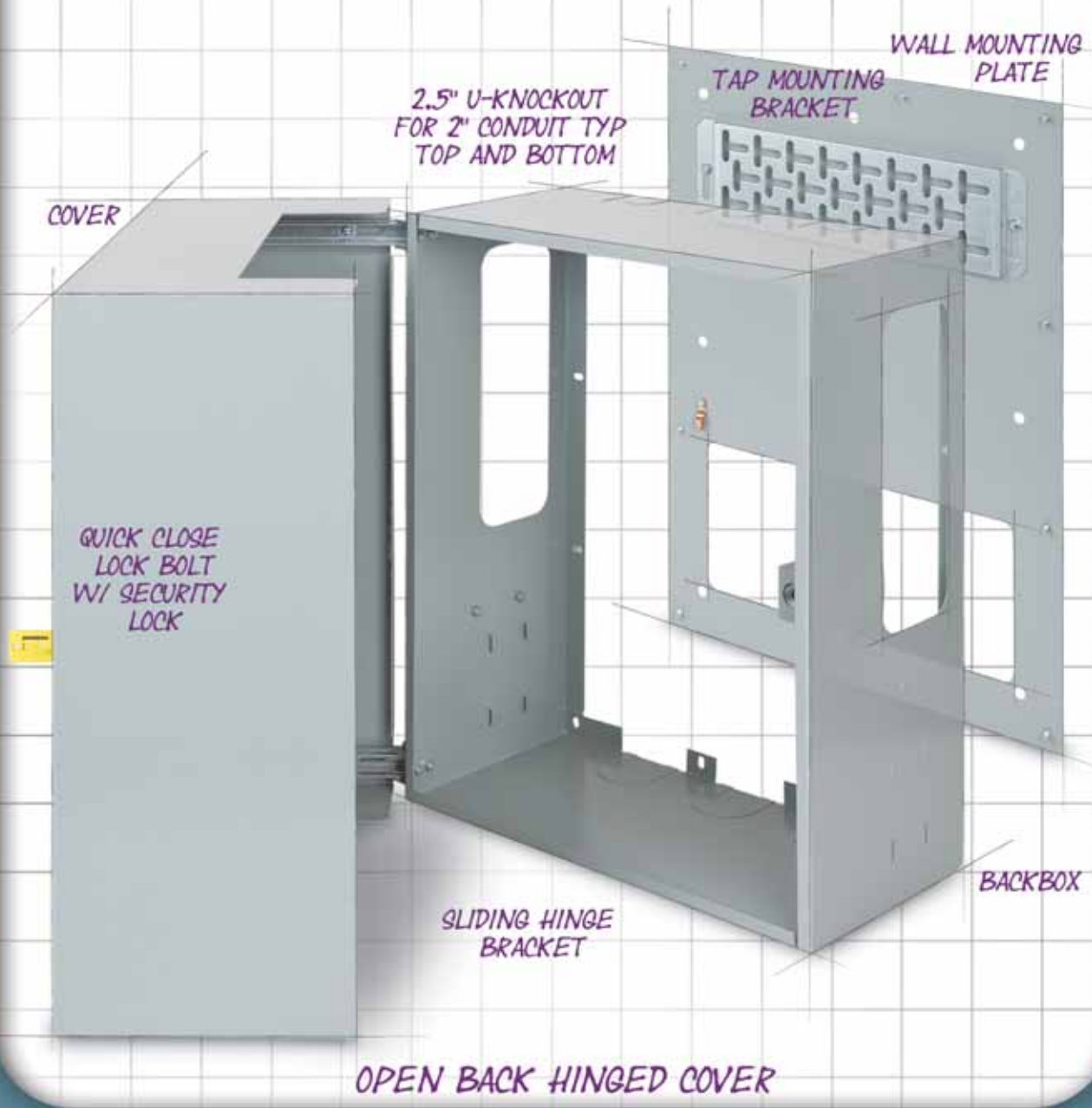


N.R.G.

CONTROL COMPANY



MDU ENCLOSURES

SAVES YOU MONEY & INCREASES SUBSCRIBER SATISFACTION

NGHCQOB

HINGED COVER



NGHCQOB features sliding hinge brackets that allow cover to remain attached to box during installation. Box is standard with quick-close lock to ensure utmost security and installer satisfaction.

UNINTERRUPTED SERVICE

- Back plate remains mounted to wall during maintenance
- Make enhancements and upgrades to existing box without interruption to customer's service

SAVE TIME ON INSTALLATION

- Open back design allows easy installation of back plate, cable, equipment frame and cover

UNSURPASSED SECURITY

- **N•R•G** offers a variety of individualized locks with secure, private-key configurations
- We monitor the various key codes in your area to ensure a superior degree of security

ELIMINATE LOSSES

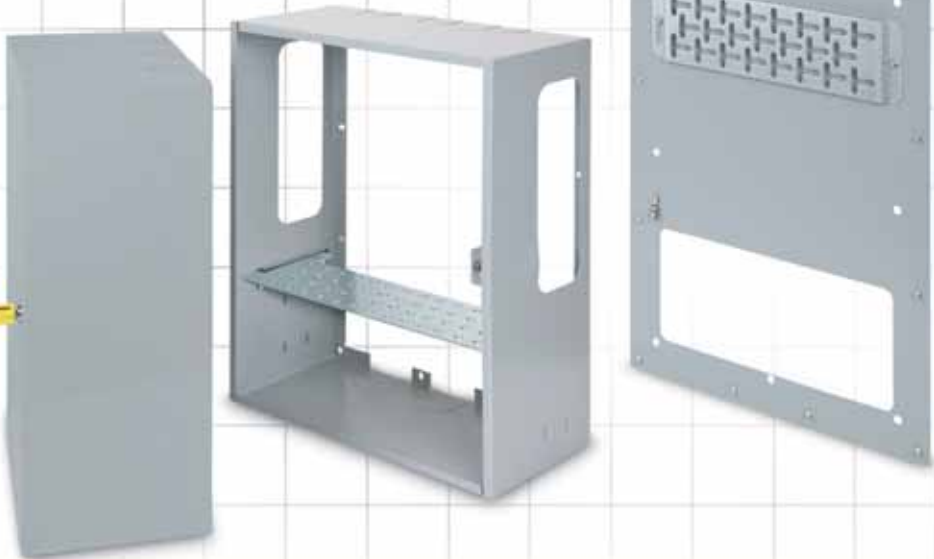
- Your commitment to using an **N•R•G** security box will prevent losses caused by illegal entry of your MDU box

Typical sizes range from 12x12x8 to 24x24x9. Custom sizes are available. Most popular sizes:

HEIGHT	WIDTH	DEPTH
12	12	8 or 9
13	12	8 or 9
18	12	8 or 9
18	18	8 or 9
23	13	8 or 9
24	18	8 or 9
24	24	8 or 9

NGQOB

LIFT-OFF COVER



NGQOB features a lift-off cover that can be completely removed for installation, and comes standard with our quick-close lock.

FEATURES

- Drain holes to keep out moisture
- U-shaped knockouts to accommodate PVC conduit
- Ground lugs
- Variety of sizes, materials, colors, locks and accessories

CONSTRUCTION

- Heavy 15 or 16 gauge mill-galvanized steel with baked on polyester powder coat finish to ensure high corrosion resistance



N·R·G ALPHA CODES FOR STANDARD KNOCKOUT SIZES

Code	Knockout Type	Conduit Sizes	Actual Knockout Size
A	Concentric	1/2" – 3/4"	7/8" – 1-1/8"
B	Concentric	3/4" – 1"	1-1/8" – 1-3/8"
C	Concentric	1" – 1-1/4"	1-3/8" – 1-3/4"
D	Concentric	1-1/4" – 1-1/2"	1-3/4" – 2"
E	Single	2"	2-1/2"
Z	Trapezoid	Special	Special

Special knockout sizes and holes available upon request.

SECURITY

QUICK-CLOSE LOCK



CompX
CHICAGO



Copyright © 2009 CompX International, Inc. All rights reserved.

PREVENT KEY REMOVAL

- Key cannot be removed from the quick-close lock when in the unlocked position

NEVER FORGET TO LOCK AGAIN

- N·R·G's MDU enclosures feature a quick-close lock that automatically locks when the cover is shut

KEY COVERS

- Available in an array of colors

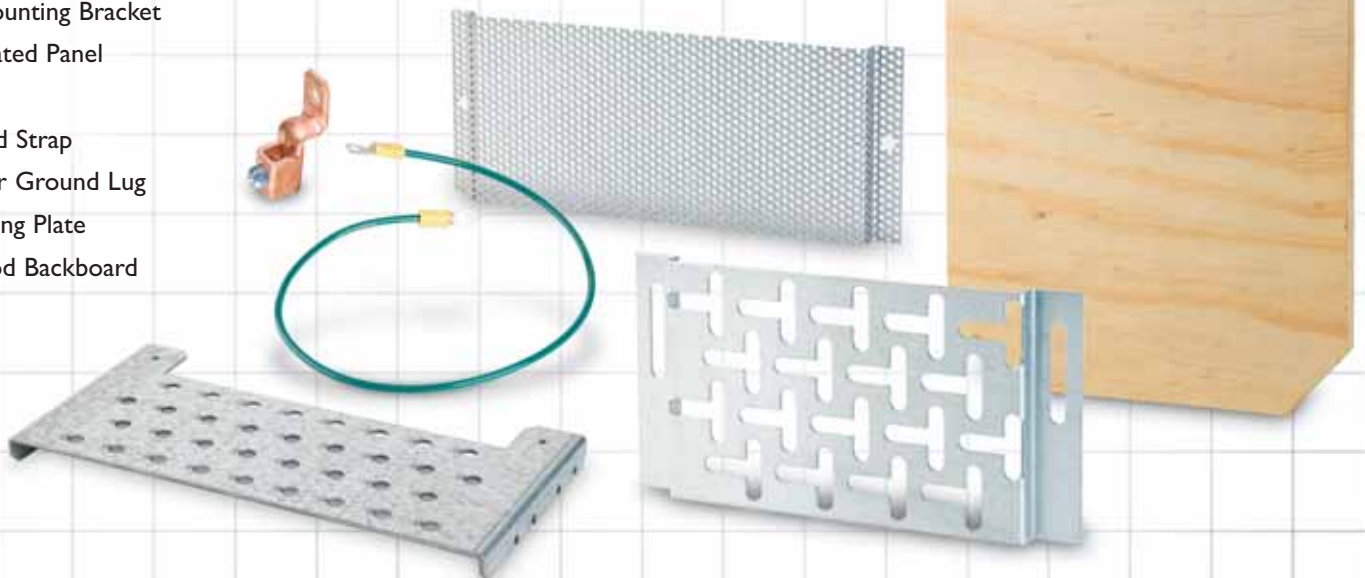
CUSTOM LOCKS

- Custom locks and key codes available upon request

ACCESSORIES

MOST COMMONLY ORDERED ACCESSORIES

- Tap Mounting Bracket
- Perforated Panel
- Shelf
- Ground Strap
- Copper Ground Lug
- Mounting Plate
- Plywood Backboard



WWW.NRGCONTROLCO.COM



CONTROL COMPANY

Don't see exactly what you are looking for? **N•R•G's** engineers want to design a box that meets your needs. We take great pride in the ability to be flexible. We are excited by the prospect of new opportunities and new designs. Call us today with **YOUR** ideas!

ORDERING INFORMATION

- **BOX STYLE** (open back, closed back or pre-wire enclosures)
- **COVER STYLE** (hinge, lift-off or screw)
- **BOX SIZE** (standard or custom)
- **KNOCKOUT CONFIGURATION AND SIZE** (standard or custom)
- **BOX COLOR** (gray, beige or custom)
- **MOUNTING PANEL** (tap bracket, perforated, plywood or custom)
- **NUMBER OF LOCKS** (custom per box)
- **STYLE OF LOCKS** (hasp, cylinder, quick-close, padlock or custom)
- **LOCK KEY CODE** (**N•R•G** can help you determine which key codes are available in your area)
- **ACCESSORIES** (tap mounting bracket, shelf, ground strap, key cover, etc.)

ABOUT OUR FABRICATION PROCESS

N•R•G's state of the art sheet metal fabricating facility located in Yadkinville, NC has been delivering quality products, at competitive prices, for over 30 years. **N•R•G** consists of a skilled workforce of trained professionals that are committed to a level of quality and security that exceeds our customers' requirements. Our engineers and skilled fabricators tailor our processes to fit each customer's individual needs while maintaining a fast turn-around and superior quality. You will find our customer support team to be vibrant, knowledgeable, flexible and trustworthy.



WWW.NRGCONTROLCO.COM

P.O. BOX 2320 YADKINVILLE, NC 27055 • 336.468.6666 • FAX 336.468.4128